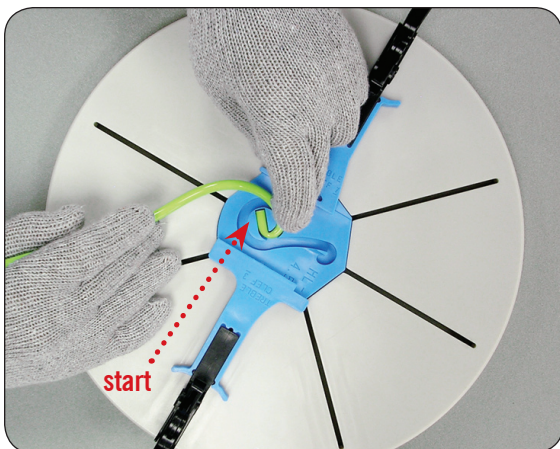
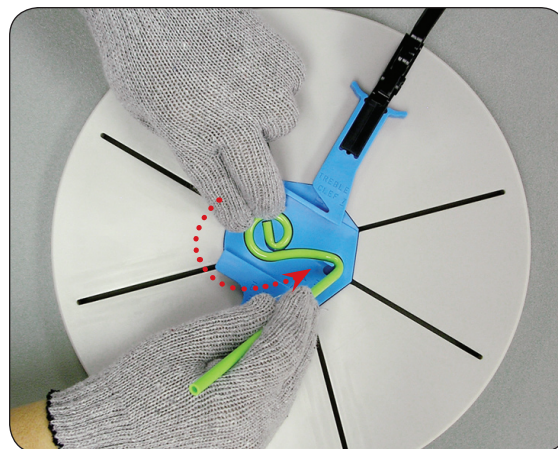


# Bending Instructions for: TPM07 TREBLE CLEF MOLD

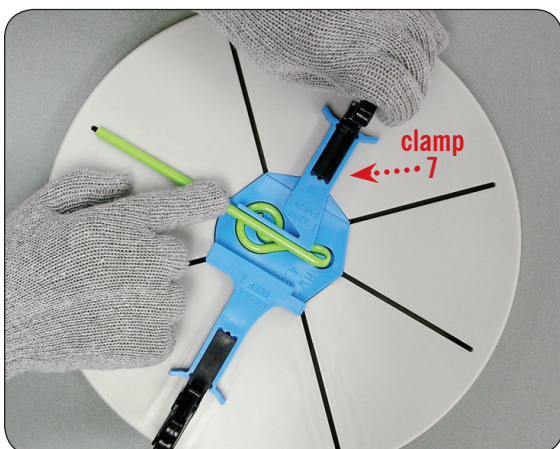
*Make sure you read the full instruction manual before bending.*



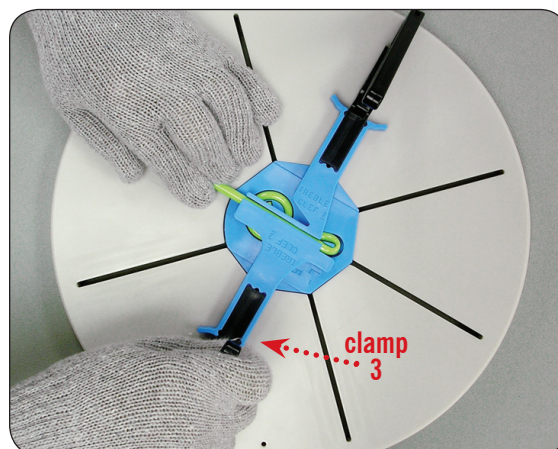
1. With a sufficiently heated pen tube, place the heated end of the tube at the start position shown above and curl rod into mold.



2. While holding down the start area, continue placing the rod in the remaining recessed mold area.



3. Pull the remainder of the pen rod towards the base of the treble clef and slowly close clamp number seven.

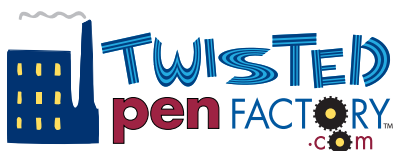


4. Finally, slowly close clamp number three. Wait until cool and then remove by using the grip/pry tool.

## *Practice Makes Perfect!*

Use the black rubber practice rod provided before attempting to bend this shape.

**NEVER put the rubber practice rod in the heating oven!**



1755 Midwest Boulevard, Indianapolis, IN 46214  
Toll Free Phone: 866-454-4217 • Local Phone: 317-536-5534  
Email: [sales@twistedpenfactory.com](mailto:sales@twistedpenfactory.com) • [www.twistedpenfactory.com](http://www.twistedpenfactory.com)